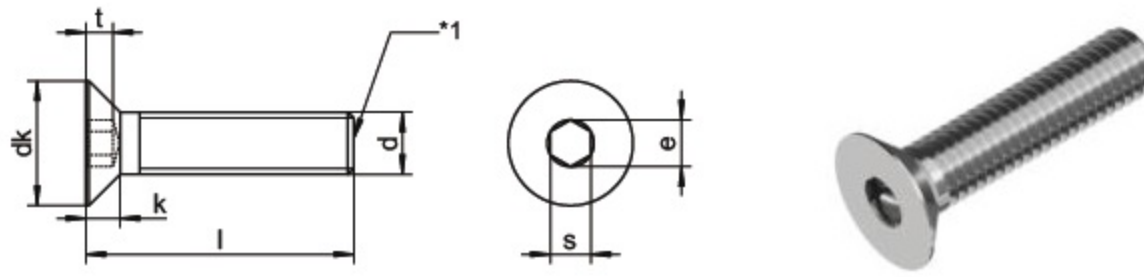


# ISO 10642 - sim. DIN 7991 Countersunk flat head screws

with hexagon socket and full thread



	dk	6.72	8.96	11.2	13.44	17.92	22.4	26.88	33.6	40.32	39
k	1.86	2.48	3.1	3.72	4.96	6.02	7.44	8.8	10.16	14.0	14.0
s	2.0	2.5	3.0	4.0	5.0	6.0	8.0	10.0	12.0	14.0	14.0
t	1.2	1.8	2.3	2.5	3.5	4.4	4.6	5.3	5.3	10.3	10.3
e	2.90	2.87	3.44	4.58	5.72	6.86	9.15	11.43	11.43	16.00	16.00
●	2.0	2.5	3.0	4.0	5.0	6.0	8.0	10.0	12.0	14.0	14.0
Length / Ø	M3	M4	M5	M6	M8	M10	M12	M16	M20	M24	
25	▲●										
30	▲●	▲●									
35	▲●	▲●	▲●								
40	▲●	▲●	▲●	▲●							
45		▲●	▲●	▲●	▲●	▲●					
50		▲●	▲●	▲●	▲●	▲●	▲●				
55		▲●	▲●	▲●	▲●	▲●	▲●	▲●			
60		▲●	▲●	▲●	▲●	▲●	▲●	▲●			
65		▲●	▲●	▲●	▲●	▲●	▲●	▲●	▲●		
70		▲●	▲●	▲●	▲●	▲●	▲●	▲●	▲●		
75			▲●	▲●	▲●	▲●	▲●	▲●	▲●		
80			▲●	▲●	▲●	▲●	▲●	▲●	▲●	▲●	
90			▲●	▲●	▲●	▲●	▲●	▲●	▲●	▲●	▲●
100			▲●	▲●	▲●	▲●	▲●	▲●	▲●	▲●	▲●
110					▲●	▲●	▲●	▲●	▲●	▲●	▲●
120					▲●	▲●	▲●	▲●	▲●	▲●	▲●
130					▲●	▲●	▲●	▲●	▲●	▲●	▲●
140					▲●	▲●	▲●	▲●	▲●	▲●	▲●
150					▲●	▲●	▲●	▲●	▲●	▲●	▲●
160					▲●	▲●	▲●	▲●	▲●	▲●	▲●
<b>SU</b>	500	200	200 ≥ 90 100	200 ≥ 45 100	100 ≥ 70 50	100 ≥ 50 50	50 ≥ 80 25	25	25	25	

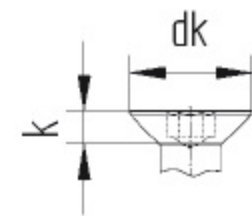
■ A1 / ▲ A2 / ● A4 | SU: Sales unit | All measurements in mm | Other dimensions on request.  
Example item no. 7991-2-8X45V0 DIN 7991 - A2 - M8 - l = 45mm - full thread - \*1 with flat point acc. to DIN 78

## 4.2 DIN – ISO comparison of the dimensions of hexagon socket countersunk head screws

Table 5

Thread		M1.6	M2	M2.5	M3	M3.5	M4	M5	M6	M8
<b>d<sub>k max.</sub></b>	ISO 10642	-	-	-	6.72	-	8.96	11.2	13.44	17.92
	DIN7991	-	-	-	6	-	8	10	12	13
<b>k<sub>max.</sub></b>	ISO 10642	-	-	-	1.86	-	2.48	3.1	3.72	4.96
	DIN 7991	-	-	-	1.7	-	2.3	2.8	3.3	4.4

Thread		M10	M12	M14	M16	M18	M20	M22	M24
<b>d<sub>k max.</sub></b>	ISO 10642	22.4	26.88	30.8	33.6	-	40.32	-	-
	DIN 7991	20	24	27	30	33	36	36	39
<b>k<sub>max.</sub></b>	ISO 10642	6.2	7.44	8.4	8.8	-	10.16	-	-
	DIN 7991	5.5	6.5	7	7.5	8	8.5	13.1	14



Please note: In accordance with DIN 74 the countersinks of these screw heads have to be designed in type F